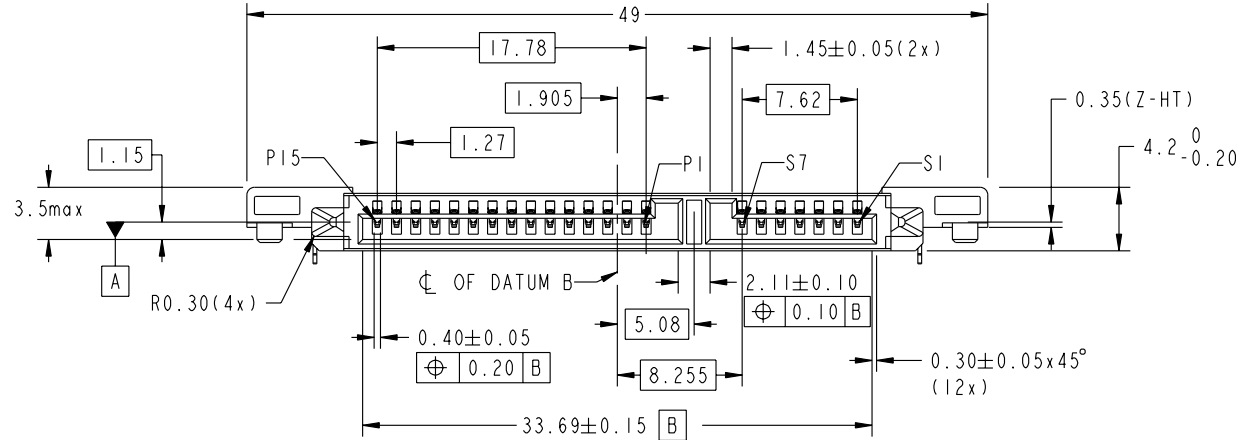
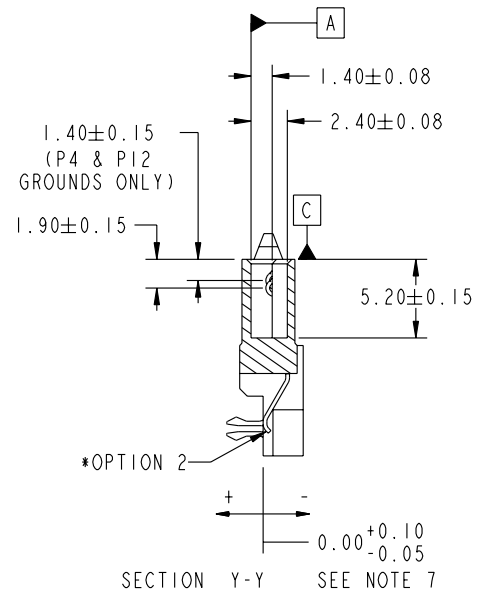
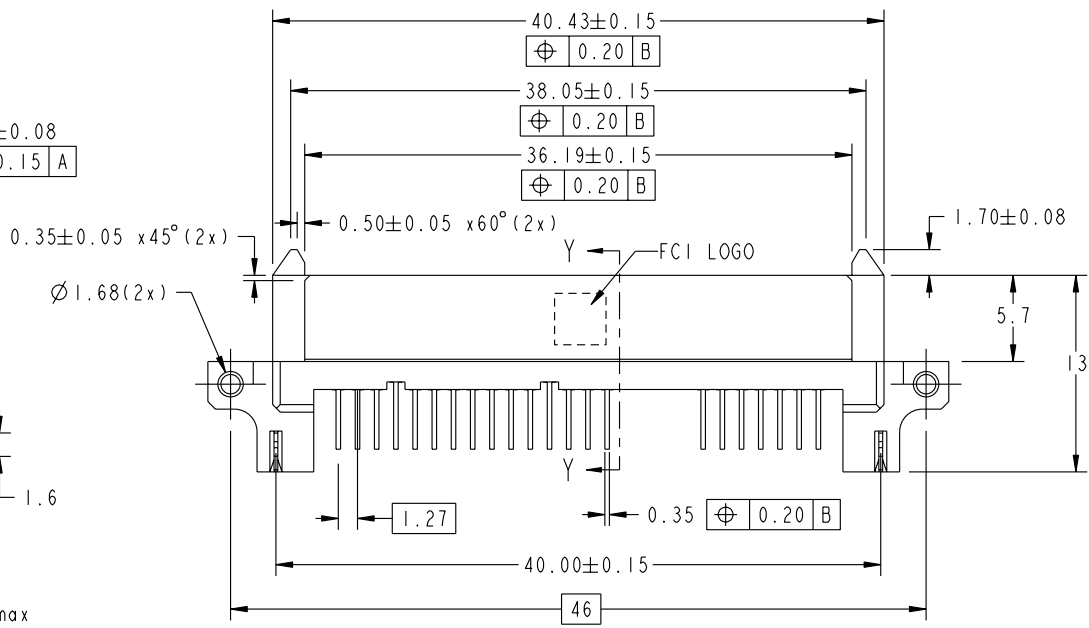
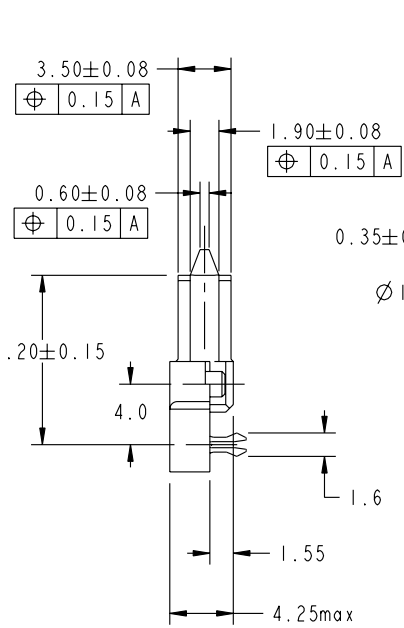
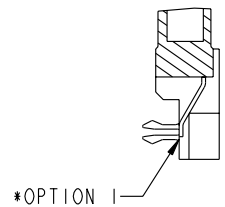


PRODUCT NO.	RECOMMENDED P.C.B. THICKNESS
10031569-001LF	1.6mm



OPTIONAL
SOLDERTAIL PROFILE



SECTION Y-Y SEE NOTE 7



Copyright FCI.

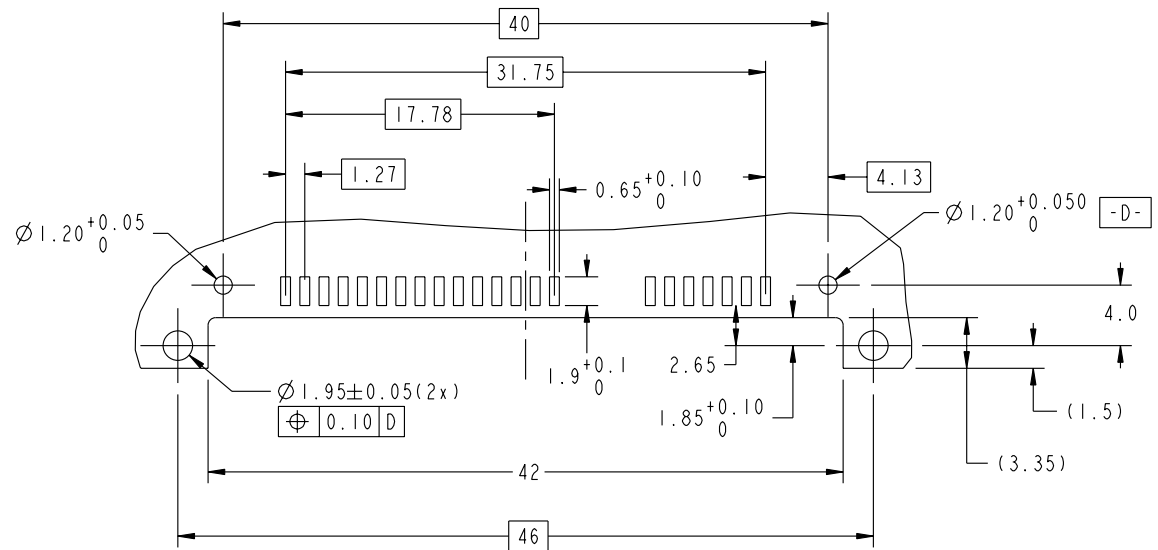
www.fciconnect.com		surface - ✓ ASME Y14.5	tolerance std ASME Y14.5	projection MM
		TOLERANCES UNLESS OTHERWISE SPECIFIED		MM
Dr	J PEH	2004-06-10	0.X ±0.25	size A4
Eng	WL CHOONG	2007-02-14	0.XX ±0.20	Scale 2:1
Chr	WL CHOONG	2007-02-14	0.XXX ±0.10	ECN S07-0049
Appr	JOEY NG	2007-02-14	Product family	SATA Spec ref
FCI		S-ATA RECEPTACLE TOP MOUNT R/A SMT ASSY		dwg no 10031569
catalog no		CUSTOMER		Rev. F
		sheet 1 of 2		

rev	ecn no	dr	date
A	S04-0120	JPEH	2004-06-10
B	S05-0019	HLW	2005-01-26
C	S05-0095	YEO	2005-03-29
D	S05-0144	YEO	2005-05-16
E	S06-0237	TAY	2006-07-17
F	S07-0049	CWL	2007-02-14
-	-	-	-

REV F - 2006-04-17

PRODUCT NO.

SEE TABLE



RECOMMENDED P.C.B LAYOUT
TOLERANCE UNLESS OTHERWISE: ±0.1

NOTES:-

1. MATERIAL:
 - 1) HOUSING : HIGH TEMP. THERMOPLASTIC, UL 94V-0
COLOR : BLACK
 - 2) TERMINAL : COPPER ALLOY
 - 3) HOLD DOWN : COPPER ALLOY
2. FINISH:
 - 1) TERMINAL : 30u" Au PLATING (CONTACT POINT) OVER 50u" MIN NICKEL
 - 2) SOLDER TAIL : 100u" MIN TIN OVER 50u" NICKEL
 - 3) HOLD DOWN : 100u" MIN TIN OVER 50u" NICKEL
3. THE STANDARD PACKAGING IS IN TRAY.
4. THE HOUSING WILL WITHSTAND EXPOSURE TO 260°C PEAK TEMPERATURE FOR 10 SECONDS IN A CONVECTION, INFRA-RED OR VAPOR PHASE REFLOW OVEN.
5. THIS PRODUCT MEETS EUROPEAN UNION DIRECTIVES AND OTHER COUNTRY REGULATIONS AS DESCRIBED IN GS-22-008
6. PART NUMBERS ENDING IN "LF" ARE MEANT FOR LEAD-FREE IDENTIFICATION. P/N XXXXXXXX-XXXLF IS EQUIVALENT TO PREVIOUS P/N XXXXXXXX-XXX
7. ALL SOLDER TAIL TO BE WITHIN 0.12mm MAX. COPLANARITY.



title
S-ATA RECEPTACLE
TOP MOUNT R/A SMT ASSY

catalog no

dwg no

10031569

Rev.
F

CUSTOMER

sheet 2 of 2



Copyright FCI.